

2010



ONTARIO WORKS DEPARTMENT

Ontario Works Caseload and Economic Indicators Report



Introduction

The County of Simcoe is the Consolidated Municipal Service Manager for the delivery of Ontario Works which includes both financial and employment support services to the residents of the County of Simcoe which includes both the Cities of Barrie and Orillia.

Financial and Employment Services are provided across five satellite offices which are located in Alliston, Collingwood, Midland, Orillia and Barrie. The County of Simcoe has also established a sub office in the Bradford area which is shared office space for both Ontario Works and Children and Community Services.

Clients in receipt of Ontario Works assistance are eligible for a variety of programs and services that are tailored to meet the individual needs of the client. Programming options include educational upgrading, literacy, job readiness workshops, career exploration, self employment as well as a variety of financial supports that can be provided to support an individual while they are participating in one or more employment or training programs. The County of Simcoe also provides individualized supports for clients who are facing barriers to employment due to mental health and addiction issues. Services provided within the Addiction Services Initiative are delivered in partnership with staff from the Simcoe County Addiction and Mental Health Services who offer both individualized and group counselling within each of the Ontario Works satellite office locations. Staff from Simcoe County Addiction and Mental Health Services work in partnership with Ontario Works Employment Services Staff, to ensure that clients are supported in a wrap around approach.

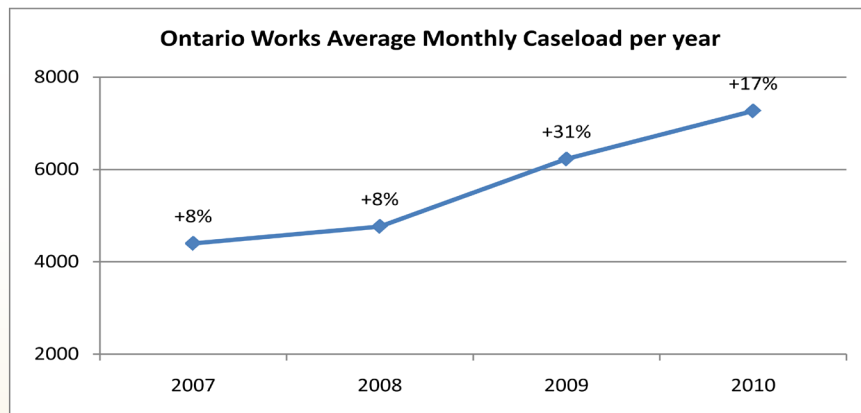
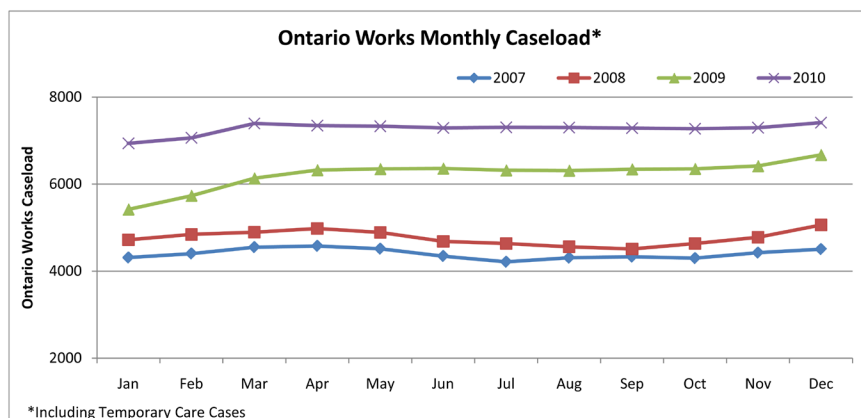
In addition to in-house services, Ontario Works has partnered with a host of community agencies that provide off site programs and services, allowing staff the ability to directly refer clients to an agency that is able to meet the individual's needs and abilities. Partnerships include agencies such as Employment Ontario, Job Connect, Apprenticeship and diploma programs. Ontario Works Staff continue to develop partnerships across all sectors of employment programs and service providers to ensure that a wide range of services are available to support the individualized needs of clients.

Ontario Works Caseload:

Since the fall of 2009, the County of Simcoe has continued to see increases in the Ontario Works Caseload. Although the most significant increase in caseload occurred between December 2008 to December 2009, which amounted to a 31.8% increase, December 2009 to December 2010 saw an additional 11.09% increase. It is important to note however that throughout 2010 there was moderate stabilization to the Ontario Works caseload starting in April to October of 2010. Although caseloads did not decrease, there was not the same increase in caseload as was noted in 2009 which would indicate that there are beginning signs of moderate economic recovery.

YEAR	JAN	FEB	MAR	APR	MAY	JUN	JUL	AUG	SEP	OCT	NOV	DEC	MTHLY AVG
2007	4311	4403	4549	4578	4513	4345	4213	4306	4330	4297	4423	4504	4398
2008	4718	4843	4895	4980	4889	4683	4633	4560	4509	4633	4779	5062	4765
2009	5418	5733	6134	6322	6348	6359	6317	6311	6342	6350	6415	6673	6227
2010	6937	7064	7393	7346	7329	7291	7304	7300	7285	7274	7297	7413	7269
10 v. 09	28.04%	23.22%	20.52%	16.20%	15.45%	14.66%	15.62%	15.67%	14.87%	14.55%	13.75%	11.09%	
10 mthly +/-	3.96%	1.83%	4.66%	-0.64%	-0.23%	-0.52%	0.18%	-0.05%	-0.21%	-0.15%	0.32%	1.59%	

***Note - The above stats DO include Temporary Care cases.



The chart, left, represents the Ontario Works Average Monthly Caseload increase from 2007-2010. Data includes the average monthly caseload for the entire County of Simcoe which also includes caseload data for both the Cities of Barrie and Orillia.

Applications for Ontario Works:

Individuals who are in need of financial assistance contact the County of Simcoe Ontario Works Department and are screened by the Integrated Services Unit in order to assess potential eligibility for Ontario Works benefits. The integrated Services Unit not only screens applications for Ontario Works but in addition, screens applications for Childcare Fee Subsidy as well as provides general resource and referral information for those individuals who are not eligible for services offered within the Social and Community Services Division. Staff working within the Integrated Services Unit also link residents to services offered through 211.

Applications for Ontario Works have continued to increase with the highest increase occurring between August 2009-August 2010, which saw a 27.6% increase. There was also a noticeable decrease in the demand for applications from April 2009 to April 2010 which saw a decrease of 37.3%. Overall however the demand for applications for social assistance has somewhat stabilized in 2010 and staff have been able to meet with applicants for social assistance within the Ministry prescribed time frame of 4 business days from date of application.

New Ontario Works Applications per Month

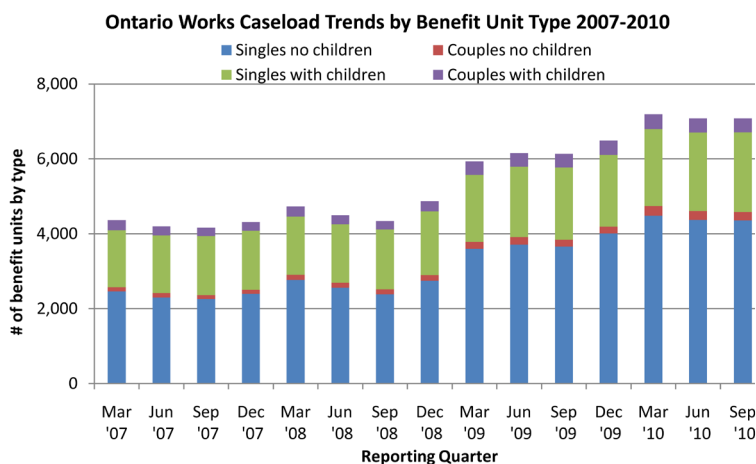
	2008	2009	2010	% change from 2008-2009 year	% change from 2009-2010 year
Jan	569	1,015	1,012	+78.4%	-0.3%
Feb	526	1,058	984	+101.1%	-7.0%
Mar	726	1,214	1,041	+67.2%	-14.3%
Apr	455	1,123	704	+146.8%	-37.3%
May	618	933	789	+51.0%	-15.4%
Jun	610	931	983	+52.6%	+5.6%
Jul	842	861	895	+2.3%	+3.9%
Aug*	810	754	962	-6.9%	+27.6%
Sep	777	878	919	+13.0%	+4.7%
Oct	835	955	983	+14.4%	+2.9%
Nov	879	859	865	-2.3%	+0.7%
Dec	846	944	934	+11.6%	-1.1%

*Data for August 2008 averaged from July and September 2008

Source: Ontario Works Department, Monthly Statistics, 2008-2010.

Ontario Works Caseload Trends by Benefit Unit Type 2007-2010

	Singles no children	Couples no children	Singles with children	Couples with children	Total
Mar '07	2,458	115	1,520	270	4,363
Jun '07	2,298	123	1,536	241	4,198
Sep '07	2,256	105	1,581	219	4,161
Dec '07	2,394	111	1,573	235	4,313
Mar '08	2,770	130	1,559	268	4,727
Jun '08	2,558	134	1,563	239	4,494
Sep '08	2,387	133	1,597	226	4,343
Dec '08	2,747	146	1,703	273	4,869
Mar '09	3,600	182	1,787	361	5,930
Jun '09	3,709	200	1,885	359	6,153
Sep '09	3,655	185	1,927	367	6,134
Dec '09	4,009	183	1,913	381	6,486
Mar '10	4,483	257	2,056	393	7,189
Jun '10	4,372	234	2,097	380	7,083
Sep '10	4,359	218	2,130	372	7,079



The above chart provides a breakdown of the Ontario Works caseload by Benefit Unit Type from March 2007 to September 2010 as reported by the Ministry of Community and Social Services, Social Assistance Quarterly Report. For the County of Simcoe it is of particular interest to note the significant number of single individuals who are in receipt of social assistance compared to singles with children and couples with and without children. In March of 2007, there were 2,458 single individuals in receipt of Social Assistance while in March 2010, there were 4,483 single individuals receiving benefits. For the same time period there were 1,520 sole support parents receiving social assistance in March of 2007 compared to 2,130 in March 2010. The current economic climate has had a significant impact on the number of individuals who have had to turn to social assistance. In addition, staff has also noted that a significant number of individual's primarily single recipients are experiencing tremendous difficulties in obtaining employment due to a multitude of barriers such as addiction and or mental health issues. Other barriers include limited educational attainment as well as affordable housing and transportation issues.

Number of Ontario Works Beneficiaries Compared to the Total Population for Simcoe County and Ontario:

Provincially, for the period of December 2009 to December 2010, there were 30, 865 more beneficiaries in receipt of social assistance with the provincial number of beneficiaries being 458,055 as of December 2010. This is a decrease from December 2008 to December 2009 which saw the number of beneficiaries increase by 52,272. When comparing the percentage of individuals in receipt of social

assistance against population, the County of Simcoe had 2.6% of the estimated population in receipt of social assistance while the provincial average was 3.5% as of December 2010. Another representation of the numbers shows that as of December 2010, 26 individuals out of 1000 were in receipt of social assistance within the County of Simcoe compared to 35 provincially.

Year	Estimated Total Population ¹	Population Change	Avg # of Beneficiaries ² per month	"Avg # of Beneficiaries per month Annual Change"	Est. proportion of population receiving social assistance	# of people per 1000 receiving social assistance
Simcoe County						
2006	438,526	1.5%	7,408	4.0%	1.7%	17
2007	443,221	1.1%	7,577	2.3%	1.7%	17
2008	448,289	1.1%	8,083	6.7%	1.8%	18
2009	452,710	1.0%	10,460	29.4%	2.3%	23
2010	457,386	1.0%	11,867	13.5%	2.6%	26
Year	Estimated Total Population ³	Population Change	Avg # of Beneficiaries ⁴ per month	"Avg # of Beneficiaries per month Annual Change"	Est. proportion of population receiving social assistance	# of people per 1000 receiving social assistance
Ontario						
2006	12,665,300	1.0%	385,076	-0.5%	3.0%	30
2007	12,792,900	1.0%	373,268	-3.1%	2.9%	29
2008	12,932,300	1.1%	374,918	0.4%	2.9%	29
2009	13,064,900	1.0%	427,190	13.9%	3.3%	33
2010	13,210,700	1.1%	458,055	7.2%	3.5%	35

^{2,4} Beneficiary refers to the total number of people receiving social assistance: head of family plus all dependents. Monthly average calculated from March, June, September and December data annually

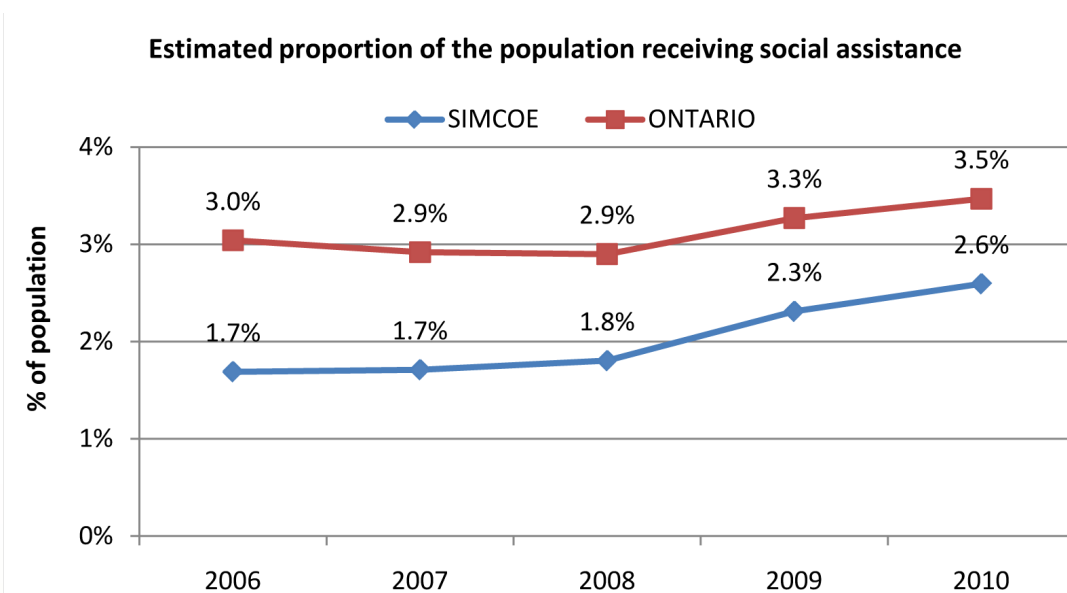
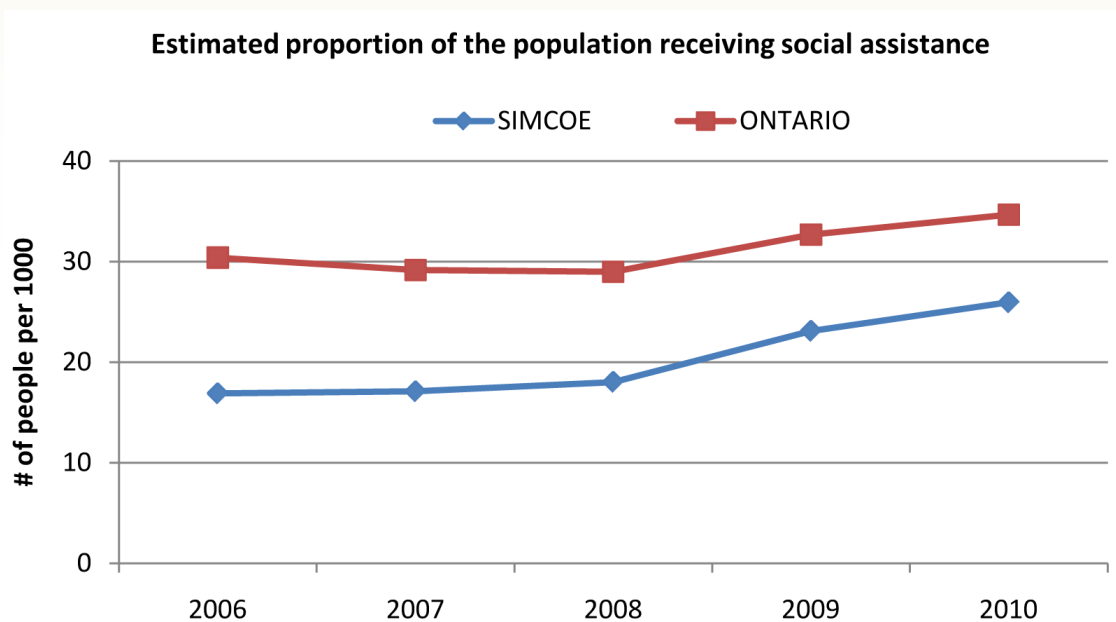
Source: ¹ Statistics Canada. February 2011. Annual Demographic Estimates: Subprovincial Areas. Table 3.6-1 Ontario census divisions.

² Statistics and Analysis Unit, MCSS. 2006-2010. Social Assistance Quarterly Reports, "CMSM's at a Glance".

³ Statistics Canada. October 2010. CANSIM 051-0001, Population by year, by province and territory.

⁴ Statistics and Analysis Unit, MCSS. September 2010. Ontario Social Assistance Monthly Statistical Report.

Number of Ontario Works Beneficiaries Compared to the Total Population for Simcoe County and Ontario:

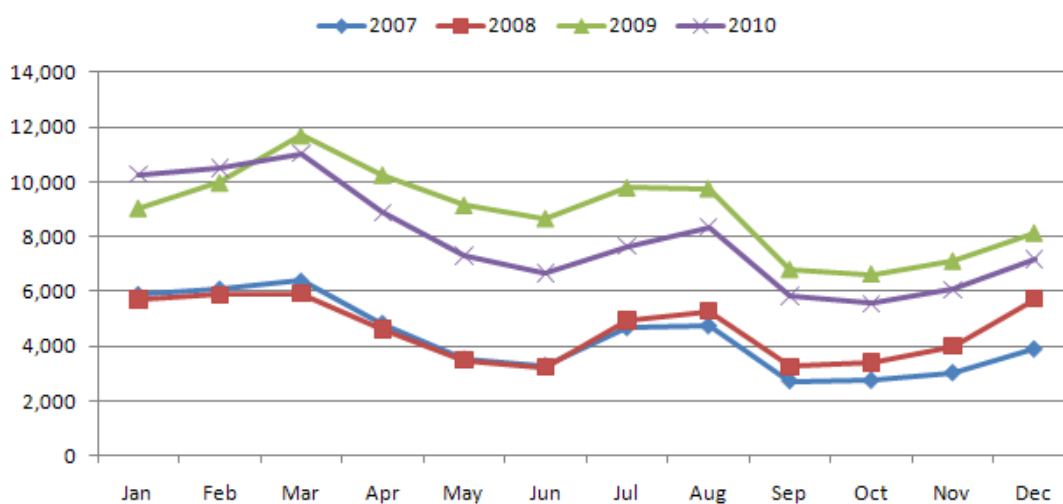


Number of Beneficiaries Receiving Regular Employment Insurance Benefits in Simcoe County



The number of individuals who have been accessing Employment Insurance Benefits in Simcoe County has been steadily increasing from December 2007 which saw the number of individuals in receipt of Employment Insurance Benefits at 3,900 while December 2010, there were 7,190 individuals in receipt of benefits. The most dramatic increase in the number of individuals in receipt of benefits occurred in March 2009 which saw 11,710 individual access Employment Insurance Benefits in Simcoe County. March 2010 saw 11,040 individuals access Employment Insurance Benefits.

YEAR	JAN	FEB	MAR	APR	MAY	JUN	JUL	AUG	SEP	OCT	NOV	DEC	MTHLY AVG
2007	5,900	6,100	6,390	4,840	3,530	3,290	4,690	4,760	2,730	2,750	3,030	3,900	4398
2008	5,710	5,870	5,930	4,630	3,480	3,240	4,940	5,280	3,250	3,400	4,000	5,730	4765
2009	9,040	9,980	11,710	10,270	9,150	8,660	9,800	9,770	6,790	6,620	7,100	8,130	6227
2010	10,270	10,500	11,040	8,880	7,310	6,670	7,650	8,350	5,830	5,550	6,060	7,190	7269
08 vs 09	+58.3%	+70.0%	+97.5%	+121.8%	+162.9%	+167.3%	+98.4%	+85.0%	+108.9%	+94.7%	+77.5%	+41.9%	
09 vs 10	+13.6%	+5.2%	-5.7%	-13.5%	-20.1%	-23.0%	-21.9%	-14.5%	-14.1%	-16.2%	-14.6%	-11.6%	



The above chart shows that there continues to be a significant number of individuals in Simcoe County who are reliant on Employment Insurance Benefits. While the number of individuals accessing Employment Insurance Benefits has decreased from 8,130 in December 2009 to 7,190 in December 2010, those accessing Employment Insurance Benefits continues to be significant. It is important to note however that although the number of individuals in receipt of Employment Insurance Benefits appears to be decreasing, many individuals who have exhausted their Employment Insurance Benefits have been unsuccessful in obtaining employment and as such, the decrease in active employment insurance claims may be a false indicator regarding economic recovery.

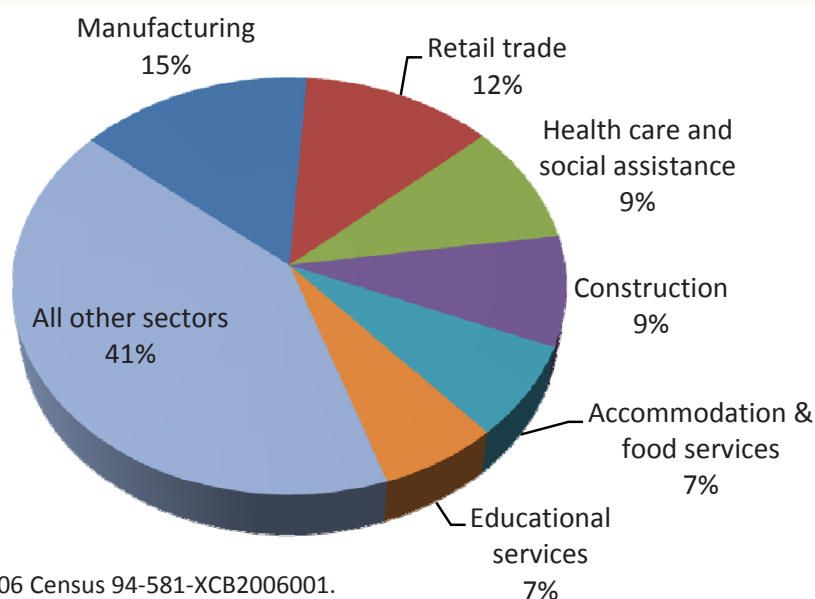
Total labour force 15 years and over by industry in Simcoe County:

The following 2006 Statistics Canada report provides a breakdown of the labour force within Simcoe County. As reported by Statistics Canada, the total labour force for Simcoe County in 2006 was 230,795. Accordingly, the largest sector within the labour force in Simcoe County was within the Manufacturing sector which totalled 34,205 individuals which represents 15% of the total labour force. In addition, 12.1% of the labour force represents 27,985 individuals as being employed within the Retail Trade Sector. The third largest pool within the labour force is within the Health Care and Social Assistance Sector which represents 9.2% of the labour force or 21,120 individuals.

SIMCOE COUNTY	TOTAL LABOUR FORCE	%
Total labour force 15 years and over by industry	230,795	100.0%
Manufacturing	34,205	14.8%
Retail trade	27,985	12.1%
Health care and social assistance	21,120	9.2%
Construction	19,490	8.4%
Accommodation and food services	16,460	7.1%
Educational services	14,425	6.3%
Public administration	13,860	6.0%
Transportation and warehousing	10,835	4.7%
Wholesale trade	10,670	4.6%
Administrative and support, waste management and remediation services	10,625	4.6%
Other services (except public administration)	10,375	4.5%
Professional, scientific and technical services	10,175	4.4%
Arts, entertainment and recreation	7,260	3.1%
Finance and insurance	5,670	2.5%
Real estate and rental and leasing	4,435	1.9%
Information and cultural industries	4,055	1.8%
Agriculture, forestry, fishing and hunting	3,850	1.7%
Utilities	1,715	0.7%
Mining and oil and gas extraction	455	0.2%
Management of companies and enterprises	190	0.1%

Source: Statistics Canada. 2006 Census 94-581-XCB2006001.

Top 6 Industry Sectors in Simcoe County, 2006 Census:



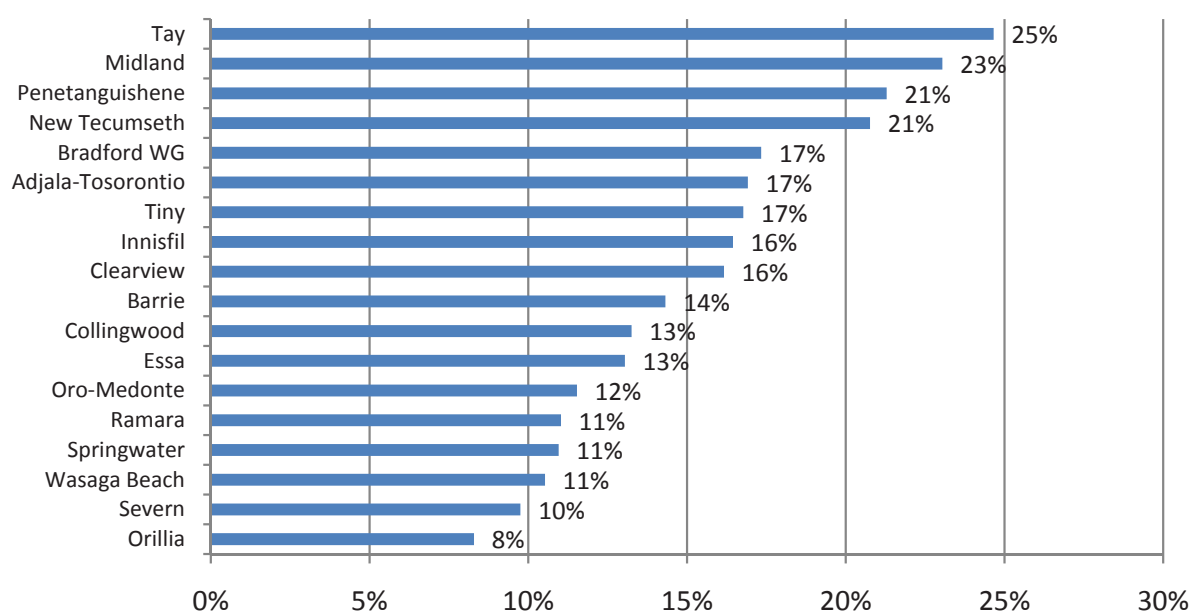
Source: Statistics Canada. 2006 Census 94-581-XCB2006001.

The above charts represent data received through Statistics Canada and are from the 2006 Census. Two of the largest areas within the labour pool in Simcoe County are within the Manufacturing and Retail Trade Sectors. According to the December 2009 Statistics Canada article titled, Canada's Employment Downturn, some of the main sectors that have been affected by the most recent recession include: construction, natural resources, transportation, warehousing, retail and wholesale trade sectors.

Population Employed in Manufacturing Industry in Simcoe County by Municipality:

	TOTAL LABOUR FORCE	# EMPLOYED IN MANUFACTURING	% OF POPULATION EMPLOYED IN MANUFACTURING
Simcoe County	230,795	34,205	15%
Tay	5,070	1,270	25%
Midland	8,035	1,885	23%
Penetanguishene	4,275	925	21%
New Tecumseth	15,075	3,175	21%
Bradford WG	14,040	2,460	17%
Adjala-Tosorontio	6,245	1,070	17%
Tiny	5,400	920	17%
Innisfil	16,880	2,820	16%
Clearview	7,725	1,260	16%
Barrie	71,145	10,315	14%
Collingwood	8,655	1,155	13%
Essa	9,910	1,305	13%
Oro-Medonte	11,470	1,335	12%
Ramara	4,785	535	11%
Springwater	10,050	1,110	11%
Wasaga Beach	6,625	710	11%
Severn	6,495	645	10%
Orillia	15,295	1,285	8%

Source: Statistics Canada. 2006 Census 94-581-XCB2006001.



Source: Statistics Canada. 2006 Census 94-581-XCB2006001.

CONCLUSION

As the Ontario Works caseload continues to fluctuate, staff remains focussed on providing financial assistance to those in need. However, based on the fact that caseloads in Simcoe County have continued to rise within the last two years staff have had to prioritize and streamline processes in order to maximize available staffing resources. In doing so, staff have been able to provide social assistance to those in need within the Ministry mandated timeframes. However, many other functions that are also part of the Ontario Works suite of programs and services have fallen behind. These areas include recovery of overpayments, updating client participation agreements as well as the annual file auditing process.

The most recent recession has broadened the partnerships and linkages Ontario Works has with other service providers that allows for the maximization of resources in order to strengthen services offered to those who are currently unemployed. Particular attention is being given to support clients who need to redirect their skills due to the current economic uncertainty. Areas such as apprenticeship, educational upgrading and self employment are three of the key areas of interest among those who are in receipt of social assistance. Ontario Works staff continues to monitor the current economic climate in order to put in place programs and services that will well position clients of Ontario Works once economic recovery is realized.

Ontario Works provides a variety of programs and services aimed at supporting individuals. These include:

BENEFITS

- Basic Needs
- Shelter Allowance
- Employment Related Expenses
- Employment Start up Benefits
- Medical Travel and Transportation Costs
- Special Diet Allowance
- Childcare Expenses
- Community Start Up Benefits
- Drug Card
- Emergency Dental
- Eyeglasses
- Earnings Exemptions after 3 month of continuous eligibility
- Extended Employment Health Benefits

PROGRAMS

- Self Employment Assistance
- Basic Education and Training Programs
- Learning Earning and Parenting Program
- Community Participation
- Job Readiness Workshops
- Apprenticeship and Skills Development Programs
- Addiction Services Initiative Program

Additional details regarding the programs and services offered through the Ontario Works Department can be found at simcoe.ca