

2009



ONTARIO WORKS DEPARTMENT

Ontario Works Caseload and Economic Indicators Report



Introduction

The County of Simcoe is the Consolidated Municipal Service Manager for the delivery of Ontario Works which includes both financial and employment support services to the residents of the County of Simcoe as well as the cities of Barrie and Orillia.

Financial and Employment Services are provided across five satellite offices which are located in Alliston, Collingwood, Midland, Orillia and Barrie. In addition, administrative services are provided at the County of Simcoe Administration Centre located in Midhurst.

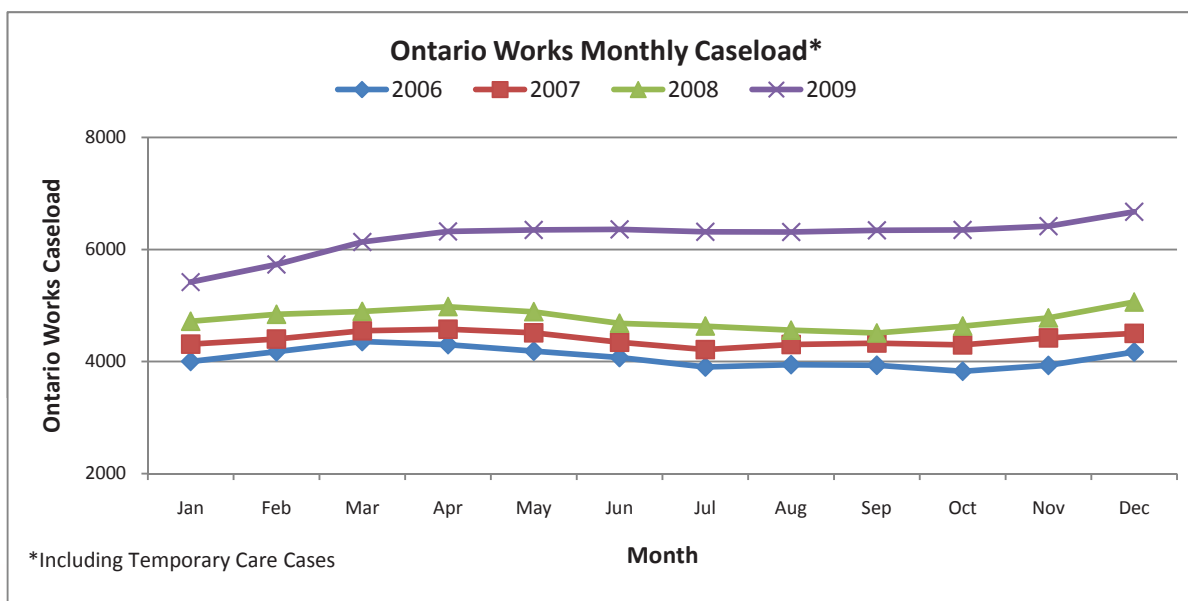
Clients who are in receipt of Ontario Works benefits are eligible for a variety of programs and services that are tailored to meet their individual needs. Programming options include educational upgrading, job readiness workshops, career exploration, self employment as well as a variety of financial supports that can be provided to support an individual while participating in various employment and/or training programs. In addition to in-house services, the Ontario Works Department has partnered with a host of community agencies that provide off site programs and services, allowing staff the ability to directly refer clients to an agency that is able to meet the individual's needs and abilities.

Ontario Works Caseload:

Since the fall of 2008, the County of Simcoe has seen a significant increase in the Ontario Works caseload. From December 2008 to December 2009 the Ontario Works Caseload increased from 5062 to 6673 which represents a 31.83% increase. The greatest increase in caseload was from September 2008 to September 2009 which saw the Ontario Works caseload increase from 4509 to 6342 which represents a 40.65% increase.

YEAR	JAN	FEB	MAR	APR	MAY	JUN	JUL	AUG	SEP	OCT	NOV	DEC	MTHLY AVG
2006	4003	4177	4358	4302	4187	4073	3904	3946	3935	3828	3933	4171	4068
2007	4311	4403	4549	4578	4513	4345	4213	4306	4330	4297	4423	4504	4398
2008	4718	4843	4895	4980	4889	4683	4633	4560	4509	4633	4779	5062	4765
2009	5418	5733	6134	6322	6348	6359	6317	6311	6342	6350	6415	6673	6227
09 v. 08	14.84%	18.38%	25.31%	26.95%	29.84%	35.79%	36.35%	38.40%	40.65%	37.06%	34.23%	31.83%	
09 mthly +/-	7.03%	5.81%	6.99%	3.06%	0.41%	0.17%	-0.66%	-0.09%	0.49%	0.13%	1.02%	4.02%	

***Note - The above stats DO include Temporary Care cases.



The above chart represents the increase in the Ontario Works Caseload month over month which includes the percentage of change from 2006 to 2009. Data includes caseload numbers for the entire County of Simcoe which includes both the cities of Orillia and Barrie.

Number of Ontario Works Beneficiaries Compared to the Total Population for Simcoe County and Ontario:

Provincially, for the period of December 2008 to December 2009, there were 52,272 more beneficiaries in receipt of social assistance, with the provincial number of beneficiaries being 427,190 as of December 2009. When comparing

the percentage of individuals in receipt of social assistance against population, the County of Simcoe had 2.3% of the estimated population in receipt of social assistance while the provincial average was 3.3% as of December 2009.

YEAR	Estimated Total Population ¹	Population Change	Avg # of Beneficiaries ² per month	Avg # of Beneficiaries per month Annual Change	Est. proportion of population receiving social assistance
Simcoe County					
2006	438,526	1.5%	7,408	4.0%	1.7%
2007	443,483	1.1%	7,577	2.3%	1.7%
2008	448,568	1.1%	8,083	6.7%	1.8%
2009*	453,711	1.1%	10,460	29.4%	2.3%
YEAR	Estimated Total Population ³	Population Change	Avg # of Beneficiaries ⁴ per month	Avg # of Beneficiaries per month Annual Change	Est. proportion of population receiving social assistance
Ontario					
2006	12,665,300	1.0%	385,076	-0.5%	3.0%
2007	12,794,700	1.0%	373,268	-3.1%	2.9%
2008	12,936,300	1.1%	374,918	0.4%	2.9%
2009	13,069,200	1.0%	427,190	13.9%	3.3%

*Population estimated on 2008 rate of growth

^{2,4} Beneficiary refers to the total number of individuals: heads of family units on social assistance plus all their dependents. Monthly average calculated from March, June, September and December data annually

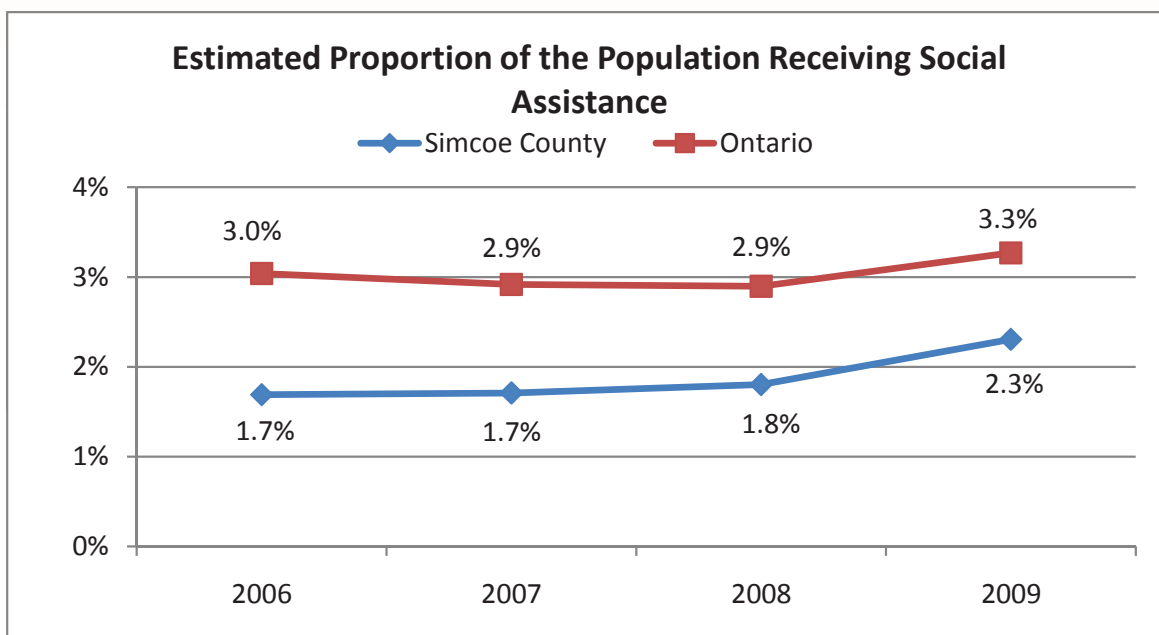
Source: ¹ Statistics Canada. October 2009. Annual population estimates by sex for July 1, 2004 to 2008, census divisions

² Statistics and Analysis Unit, MCSS. 2006-2009. Social Assistance Quarterly Reports, "CMSM's at a Glance".

³ Statistics Canada. November 2009. CANSIM 051-0001, Population by year, by province and territory.

⁴ Statistics and Analysis Unit, MCSS. December 2009. Ontario Social Assistance Monthly Statistical Report.

Number of Ontario Works Beneficiaries Compared to the Total Population for Simcoe County and Ontario:



The above chart compares the increase in the estimated population across Simcoe County from 2006 to 2009 to the increase in the number of beneficiaries in receipt of social assistance for the same time period. The chart further provides the estimated population across the province of Ontario against the number of beneficiaries across the province for the same time period. For the purposes of this report, the caseload includes all members of a benefit unit which comprises of applicants, spouses and dependants.

Applications for Ontario Works on the Rise:

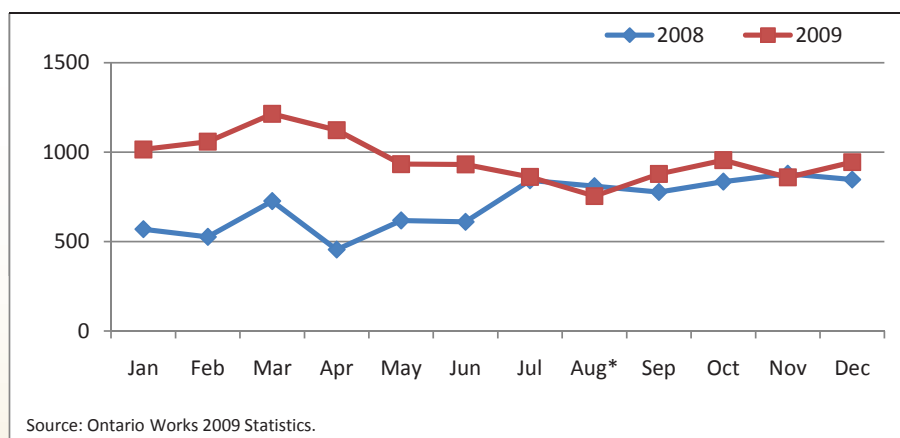
Individuals who are in need of financial assistance contact the County of Simcoe Ontario Works Department and are screened by the Integrated Services Unit in order to assess potential eligibility for Ontario Works benefits. The Integrated Services Unit not only screens applications for Ontario Works but in addition, screens applications for Childcare Fee Subsidy as well as provides general resource and referral information for those individuals who are not eligible for services offered within the Social Services Division.

Applications for Ontario Works have been steadily increasing from 2008 to 2009. The most significant increase in the number of new applications screened by the Integrated Services unit took place in the first quarter of 2009. For the first quarter of 2008, there were 1,821 applications screened, while for the same period of time in 2009, there were 3,287 applications screened which represents a 80.41% increase. The most noticeable increase was between April 2008 to April 2009 where the Integrated Services Unit saw a 146.8% increase in the number of applications screened for social assistance.

New Ontario Works Applications per Month

Month	2008	2009	% change from previous year
Jan	569	1015	+78.4%
Feb	526	1058	+101.1%
Mar	726	1214	+67.2%
Apr	455	1123	+146.8%
May	618	933	+51.0%
Jun	610	931	+52.6%
Jul	842	861	+2.3%
Aug	810*	754	-
Sep	777	878	+13.0%
Oct	835	955	+14.4%
Nov	879	859	-2.3%
Dec	846	944	+11.6%

*Data for August 2008 averaged from July and September 2008



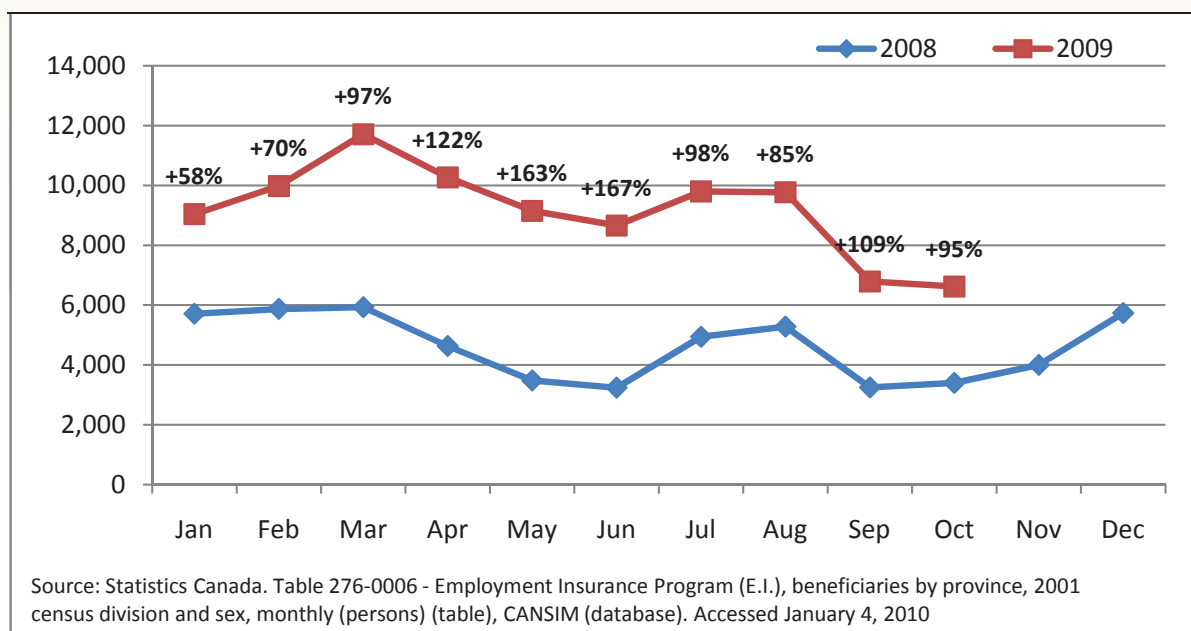
Number of Employment Insurance Beneficiaries in Simcoe County:

The number of individuals who have been accessing Employment Insurance Benefits in Simcoe County has been steadily increasing from January 2009 to October 2009. The highest number of beneficiaries requiring regular benefits during the period reviewed was March 2009, at which time 11,710 individuals were in receipt of benefit.

	Beneficiaries receiving regular benefits	% Change from previous month	% change from previous year
Jan '08	5,710	-	
Feb '08	5,870	2.8%	
Mar '08	5,930	1.0%	
Apr '08	4,630	-21.9%	
May '08	3,480	-24.8%	
Jun '08	3,240	-6.9%	
Jul '08	4,940	52.5%	
Aug '08	5,280	6.9%	
Sep '08	3,250	-38.4%	
Oct '08	3,400	4.6%	
Nov '08	4,000	17.6%	
Dec '08	5,730	43.3%	
Jan '09	9,040	57.8%	+58.3%
Feb '09	9,980	10.4%	+70.0%
Mar '09	11,710	17.3%	+97.5%
Apr '09	10,270	-12.3%	+121.8%
May '09	9,150	-10.9%	+162.9%
Jun '09	8,660	-5.4%	+167.3%
Jul '09	9,800	13.2%	+98.4%
Aug '09	9,770	-0.3%	+85.0%
Sep '09	6,790	-30.5%	+108.9%
Oct '09	6,620	-2.5%	+94.7%

Source: Statistics Canada. Table 276-0006 - Employment Insurance Program (E.I.), beneficiaries by province, 2001 census division and sex, monthly (persons) (table), CANSIM (database). Accessed January 4, 2010: http://cansim2.statcan.gc.ca/cgi-win/cnsmcgi.exe?Lang=E&CNSM-FI=CIV/CIV_1-eng.htm

Number of Employment Insurance Beneficiaries in Simcoe County Continued:



Although the above chart shows a significant increase in the number of individuals in receipt of Employment Insurance Benefits in 2009, October numbers show a decrease of 2,420 individuals receiving Employment Insurance Benefits from January 2009 compared to October 2009. It is important to note however that although the number of individuals in receipt of Employment Insurance benefits appears to be decreasing, many individuals who have exhausted their Employment Insurance Benefits remain unsuccessful in obtaining employment and as such, the decrease in active employment insurance claims may be a false indicator regarding economic recovery.

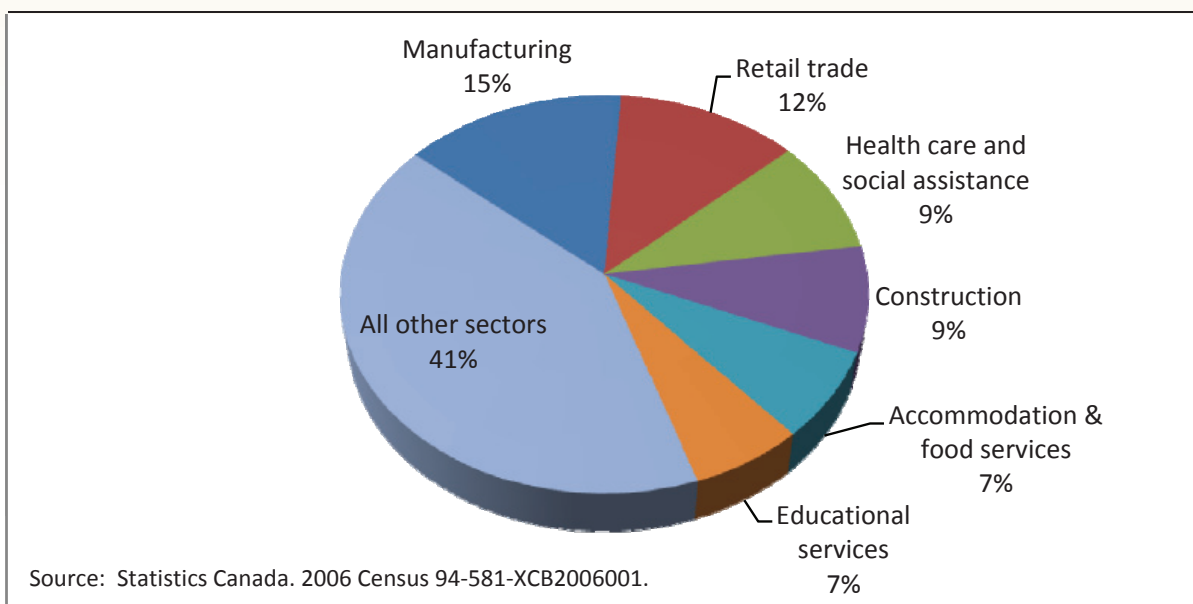
Total labour force 15 years and over by industry in Simcoe County:

The current recession has had a significant impact on the labour pool in Simcoe County. One of the sectors that has been most impacted by the recession is within the manufacturing sector. According to the 2006 Statistics Canada data, 34,205 individuals in Simcoe County were working within the manufacturing sector. According to Statistics Canada, the total labour force for the County of Simcoe in 2006 was 230,795, and of that, 34,205 individuals were employed within the manufacturing sector which amounted to 15% of the total labour force. Although the data is from 2006, it would suggest that Simcoe County has been greatly affected by the current recession in part due to the fact that a significant part of the labour pool is within the manufacturing sector.

SIMCOE COUNTY	TOTAL LABOUR FORCE	%
Total labour force 15 years and over by industry	230,795	100.0%
Manufacturing	34,205	14.8%
Retail trade	27,985	12.1%
Health care and social assistance	21,120	9.2%
Construction	19,490	8.4%
Accommodation and food services	16,460	7.1%
Educational services	14,425	6.3%
Public administration	13,860	6.0%
Transportation and warehousing	10,835	4.7%
Wholesale trade	10,670	4.6%
Administrative and support, waste management and remediation services	10,625	4.6%
Other services (except public administration)	10,375	4.5%
Professional, scientific and technical services	10,175	4.4%
Arts, entertainment and recreation	7,260	3.1%
Finance and insurance	5,670	2.5%
Real estate and rental and leasing	4,435	1.9%
Information and cultural industries	4,055	1.8%
Agriculture, forestry, fishing and hunting	3,850	1.7%
Utilities	1,715	0.7%
Mining and oil and gas extraction	455	0.2%
Management of companies and enterprises	190	0.1%

Source: Statistics Canada. 2006 Census 94-581-XCB2006001.

Top 6 Industry Sectors in Simcoe County, 2006 Census:

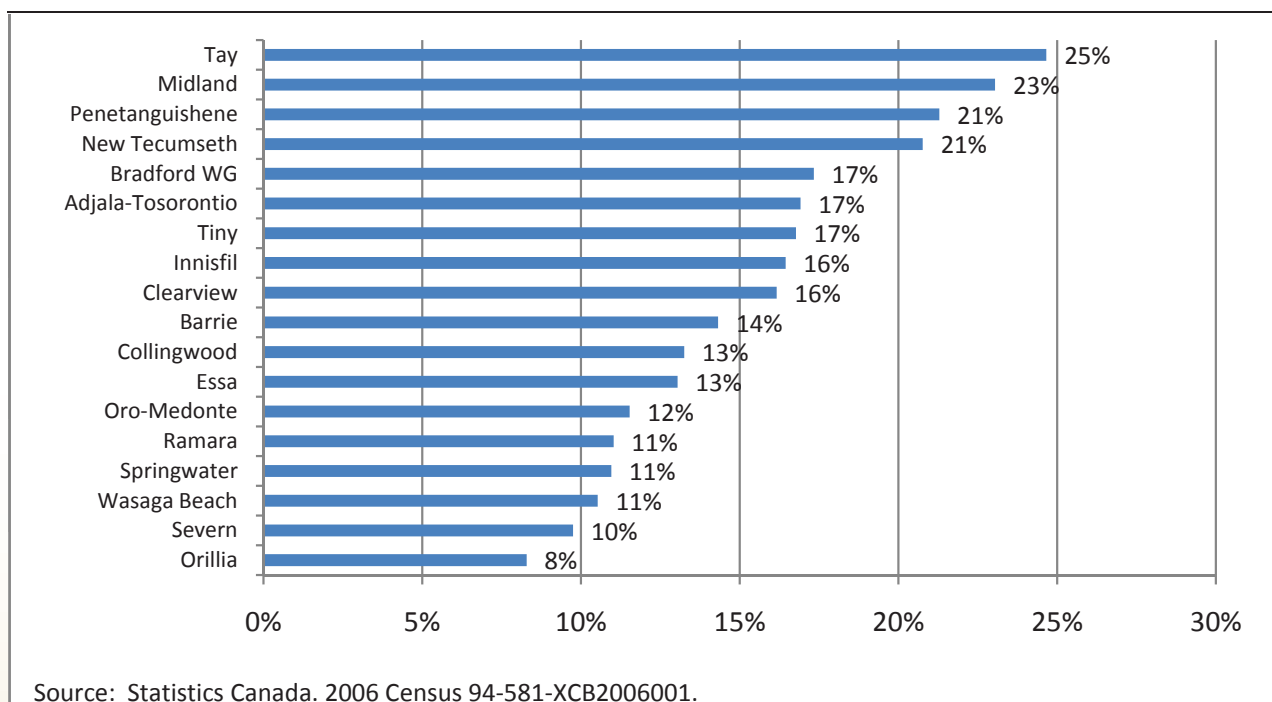


The above charts represent data received through Statistics Canada and are from the 2006 Census. As indicated, 15% of the labour pool in 2006 was manufacturing which is a sector that has been impacted by the current recession. According to the December 2009 Statistics Canada article titled, *Canada's Employment Downturn*, other sectors that have been affected by the current recession include; construction, natural resources, transportation, warehousing, retail and wholesale trade sectors.

Population Employed in Manufacturing Industry in Simcoe County by Municipality:

	TOTAL LABOUR FORCE	# EMPLOYED IN MANUFACTURING	% OF POPULATION EMPLOYED IN MANUFACTURING
Simcoe County	230,795	34,205	15%
Tay	5,070	1,270	25%
Midland	8,035	1,885	23%
Penetanguishene	4,275	925	21%
New Tecumseth	15,075	3,175	21%
Bradford WG	14,040	2,460	17%
Adjala-Tosorontio	6,245	1,070	17%
Tiny	5,400	920	17%
Innisfil	16,880	2,820	16%
Clearview	7,725	1,260	16%
Barrie	71,145	10,315	14%
Collingwood	8,655	1,155	13%
Essa	9,910	1,305	13%
Oro-Medonte	11,470	1,335	12%
Ramara	4,785	535	11%
Springwater	10,050	1,110	11%
Wasaga Beach	6,625	710	11%
Severn	6,495	645	10%
Orillia	15,295	1,285	8%

*Numbers may not add due to rounding.



CONCLUSION

As the current Ontario Works Caseload continues to increase, the present focus is ensuring that the needs of those who require assistance are served quickly and that staff provides all appropriate services both in-house as well as with partnering agencies. The current recession has enhanced linkages between Ontario Works and various educational and training providers to ensure that Ontario Works clients are given all available opportunities to upgrade their skills during a time when employment opportunities are limited. Through enhanced linkages with a variety of programs and service providers, clients of Ontario Works will be well positioned to apply for available employment opportunities once economic recovery is realized.

Ontario Works provides a variety of programs and services aimed at supporting individuals. These include:

BENEFITS

- Basic Needs
- Shelter Allowance
- Employment Related Expenses
- Employment Start Up Benefits
- Medical Travel and Transportation Costs
- Special Diet Allowance
- Child Care Expenses
- Community Start Up Benefits
- Drug Card
- Emergency Dental
- Eyeglasses
- Earnings Exemptions after 3 months of continuous eligibility
- Extended Employment Health Benefits

PROGRAMS

- Self Employment Assistance
- Basic Education and Training Programs
- Learning Earning and Parenting Program
- Community Participation
- Job Readiness Workshops
- Apprenticeship and Skills Development Programs
- Addiction and Mental Health Support Services

Additional details on programs and services can be found at simcoe.ca